



X-Loupe®

Solution Image Management Software

1.89mm

X-Loupe® Solution is an image handling software allowing advanced functions for Zooming, Annotation, Measurement, Extended Focus, Extended Exposure, etc. Specially made for X-Loupe® Microscope camera, X-Loupe® Solution equipped with a modern and intuitive user interface for complete procedure of micro image processing, measurement analysis and report generation. It can be applied to industrial QC, medical & scientific research and micro image analysis in various fields.

Modernized Interface and Functionality

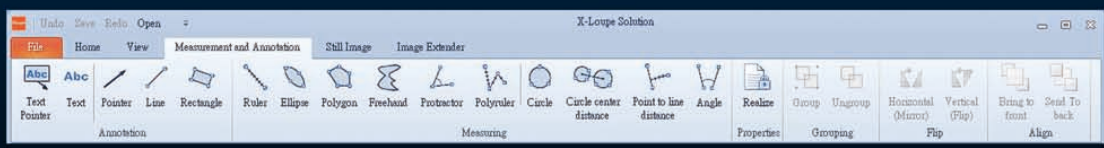
- [Higher efficiency]** New de facto 'Office 2010' GUI. Functionality has been grouped logically, and the Ribbon contains 5 tabs with different groups that you click to get command.
- [Easy for viewing]** Panorama view for easy image maneuvering in zoomed images. Multiple image galleries with thumb view.
- [More flexibility]** Provide complete management tool to add, modify and delete optics configuration.
- [Variety reports]** Beside a JPEG report, measurement results and image can easily be exported to a Microsoft Excel spreadsheet. This allows further data processing in a flexible way. Furthermore, the report can be automatically converted to a PDF report.
- [Lens calibration]** Each optical device and objective lens can be calibrated individually. In this way several microscopes and other optical systems can be managed by the same software installation.
- [USB dongle]** the software can be installed on several computers working along with a portable USB dongle.

Function description:

[View] A 'Magnify glass' to zoom with a view; Panorama view for easy image maneuvering in zoomed images; multiple image galleries with thumb view.

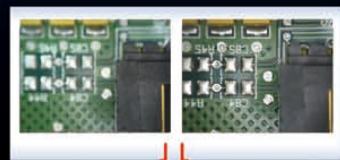
[Annotation] Allow users to attach notes or user references to areas of a picture; the font and linear format is customizable.

[Report] Allow to make the annotations a permanent part of the image. It is also possible to export the data to an Excel and PDF document. A customizable report template allows adjusting the log, font and layout to create a clear and professional report

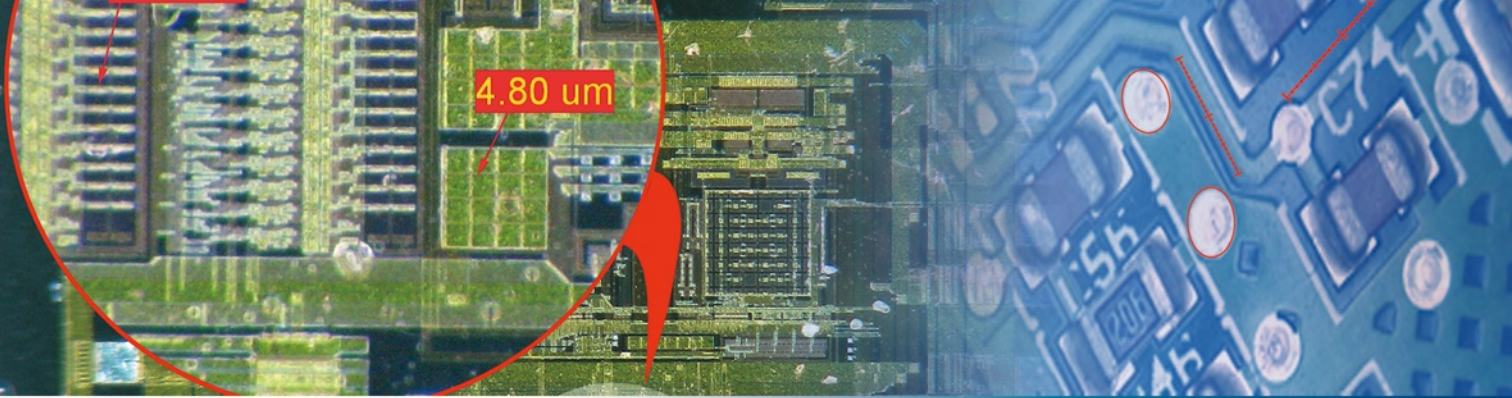


[Measurement] Simply click on the appropriate icon and draw right on the image to measure the area, angle and distance. The figures will be displayed beside the graph automatically. Allows to measure Angle, Ellipse, Circle (three-point measurement), Polygon, Circle center distance, Point to line distance, Freehand drawing, etc., and also provide the Ruler, Polyruuler, Protractor and other tools. Measurement precision and measuring unit can be set individually.

[Extended Focus] Microscopy imaging often suffers from limited depth-of-focus. However, the object can be "optically sectioned" by moving the object along the optical axis; different areas appear in focus in different images. Extended Focus function in X-Loupe® Solution can combine those images into one single sharp image. If the images have different angles to the optical axis, the software will automatically compensate for this. The combination of the Extended Focus capability in the X-Loupe® Solution and the extreme high resolution capability of the X-Loupe® makes it easy to capture stunningly high quality images with almost unlimited focus depth, ideal for research and routine work.



<Extended Focus diagram>



[Extended Exposure] This is very useful when the object under inspection has reflections, very dark or very bright areas in combination, thereby making it impossible to expose the total image correctly with one single capture. Extended Exposure combines multiple images, each captured with different exposure time and having only a part of the image correctly exposed. X-Loupe® Solution can combine these images into one single well exposed image.

Version Comparison	X-Loupe® Image Management Software (previous version)	X-Loupe® Solution (Standard/Premium)
Operating system	Windows XP Professional with SP2 or later	More platforms supported : 32bits / 64bits Windows
Operating interface	Navigation menu with graphic interface	The Ribbon contains 5 tabs with different groups that you click to get commands
Language	English interface only	Multilingual interface – English / traditional Chinese / Japanese / Korean, and provides English/Chinese manual. Language can be easily switched on the fly, no need for download and installation of extra language packages.
Measurement function	Distance, angle, area and perimeter of ellipse, circle and polygon	In addition to those measurement function, adds new features such as Circle center distance, Point to line distance, Circle (three-point measurement), Polyruuler, and Protractor.
Report format	report and Excel report only	In addition to JPEG and Excel reports, adds new PDF report
Optics Configuration		Complete management tools for optics configuration such as create/ edit/ delete/ import/ export/ backup/ restore.
Image reinforcement	Extended Focus	Besides of a state of the art Extended Focus function, also provides another advanced function: extended exposure (* Those features are available only in Premium version)

We (Lumos Tech.) reserves the right to change the product appearance or specification. The contents of catalogs / manuals are subject to change without prior notice.

Free trial download:

Download a free trial-version now from www.x-loupe.com. Without a proper USB dongle, the trial program can run 10 minutes each time and the functions of [Save], [Reporting] and [Image Extender] are not available.

Computer Requirements:

- 2 ~ 4 GB of RAM recommended
- 10GB of available hard disk space
- Works with 32 bits Windows XP or 32 bits / 64 bits Windows 7
- High resolution monitor is recommended.

Specifications and products are subject to change without any notice or obligation on part or Lumos.

Option

When shooting continuous photos for **X-Loupe® Solution**, it is recommended to use **X-Loupe®** specialized stand as the auxiliary instrument in order to optimize the image quality.

