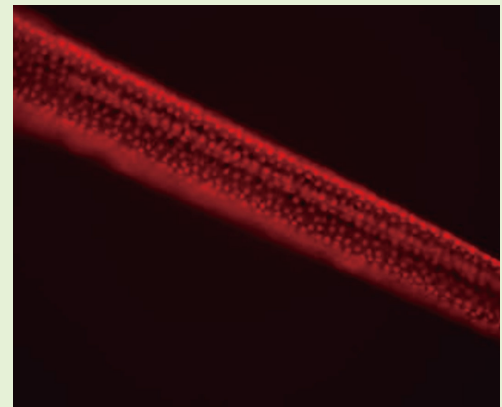
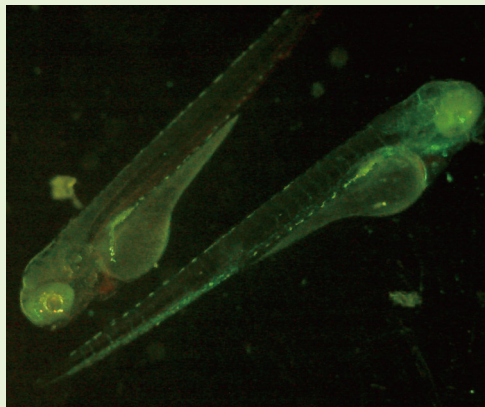
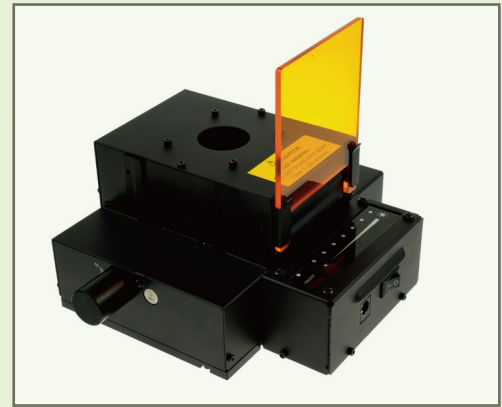
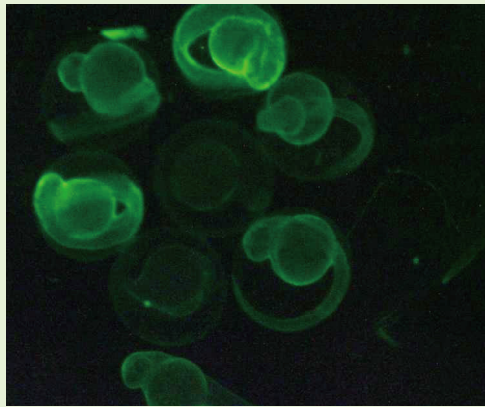
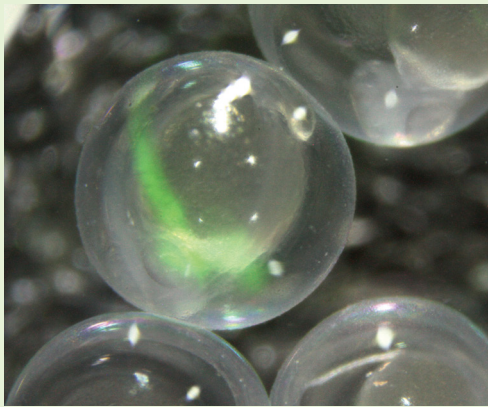
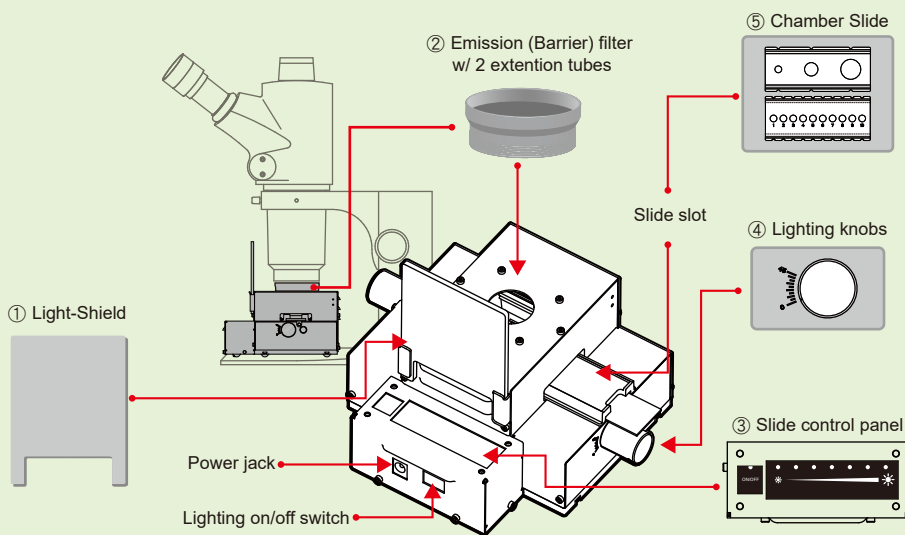


Zebrafish Fluorescence Observation Kit



WHAT'S IT FOR ?

Based the needs for upgrading existing labs equipments, used for fluorescent zebrafish in living body studies.



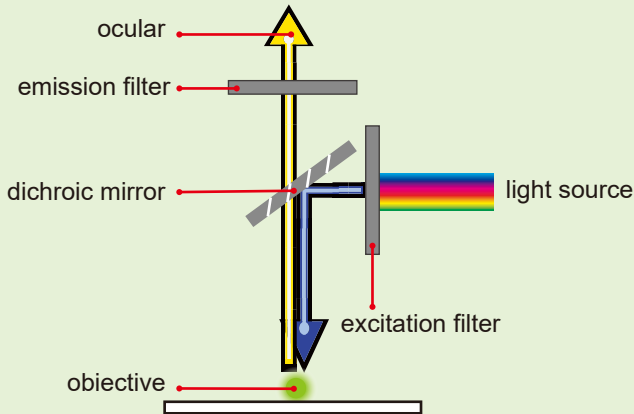
- ① Designed with starter function for protection to avoid the leak of blue light to damage eyes.
- ②&⑤ With 4 type of chamber slides, and over 10 type of emission filters are available for different purposes.
- ③ 5-steps lighting intensity, and memory function for last time setting.
- ④ Turning knobs provide a wide range of lighting adjustment. Adjustable illumination angles get rid of the glare from water surface.

Why is it worth buying?

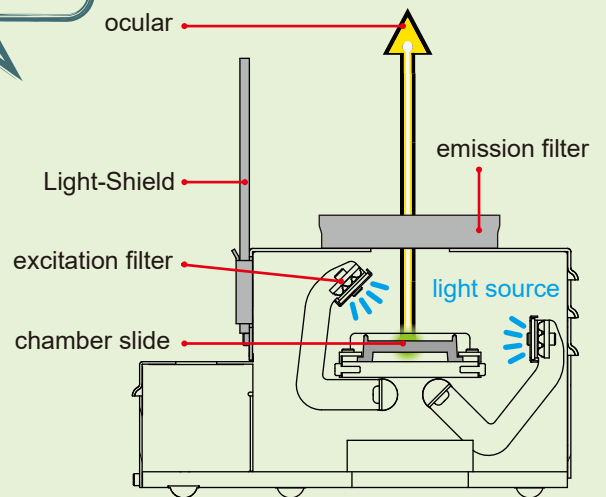
- No need to retrofit the stereo microscopes that you have. Simply add X-Loupe® Zebrafish Fluorescence Observation Kit under the stereo microscope is easy for your lab to upgrade white-light stereo microscopes with the capability of fluorescence observation.
- Price is one-tenth of a brand-new fluorescence stereo microscope. The innovative device incorporated in microscope is attractive, not only in its original design, but also, and most particularly, is the price.
- Dedicated chamber slide remains the amount of water which increases the survival rate of zebrafish.

Besides Epi-fluorescence
Microscopy, there's else choice for
making zebrafish observations...

HOW IT WORKS ?

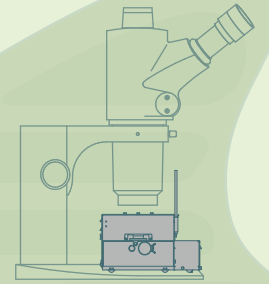


Epi-fluorescence microscope



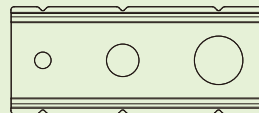
Zebrafish Fluorescence Observation Kit

- GFP and DsRed versions are selectable. Other excitation lights are customized.
- With sufficient LED excitation, easy to show the weak fluorescence performed in the blood vessels or the nervous system of zebrafish embryo.
- The Sets of Chamber slide or Filter are available for a saving over individual piece price.

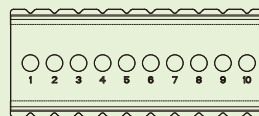


**X-loupe® Zebrafish Fluorescence
Observation Kit Specification**

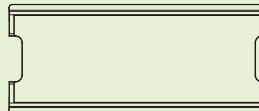
	GFP version(Blue Light)	DsRed version(Green Light)
Light Source	12 High-Power LED	
Excitation wavelength	465nm~485nm	520nm
Image Filter	GFP emission	DsRed emission
Dimension (mm)	190(L)X140(W)X80(H)	
Input Voltage (power adapter)	100-240V AC 50/60Hz	
Working Voltage (Unit)	24V DC	
Maximum Working Current	2.0A	
Safety	CE, Fcc	



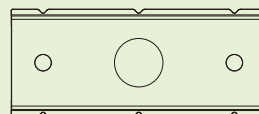
Chamber Slide 1 (Standard)
Slide for zebrafish. Large (15mm), Medium (10mm) and Small(5mm) well available.



Chamber Slide 2 (Standard)
Screening Slide for small zebrafish.



Chamber Slide 3 (Option)
Conversion Slide Pack for standard microscope slide.



Chamber Slide 4 (Option)
Special Slide for mice embryo.
(Work with embryo observation kit.)

We (Lumos Tech.) reserves the right to change the product appearance or specification.
The contents of catalogs / manuals are subject to change without prior notice.

Distributor



台北市 116 文山區萬和街8號7樓
7th floor, No.8, Wanhe St., Wenshan District,
116 Taipei City, Taiwan, R.O.C.
TEL:886-2-2230-1168 FAX:886-2-2239-2112
e-mail: contact@lumos.com.tw
www.x-loupe.com www.lumos.com.tw

LUMOS
Lumos Technology Co. Ltd.
承奕科技股份有限公司

D ZF-IE
072413